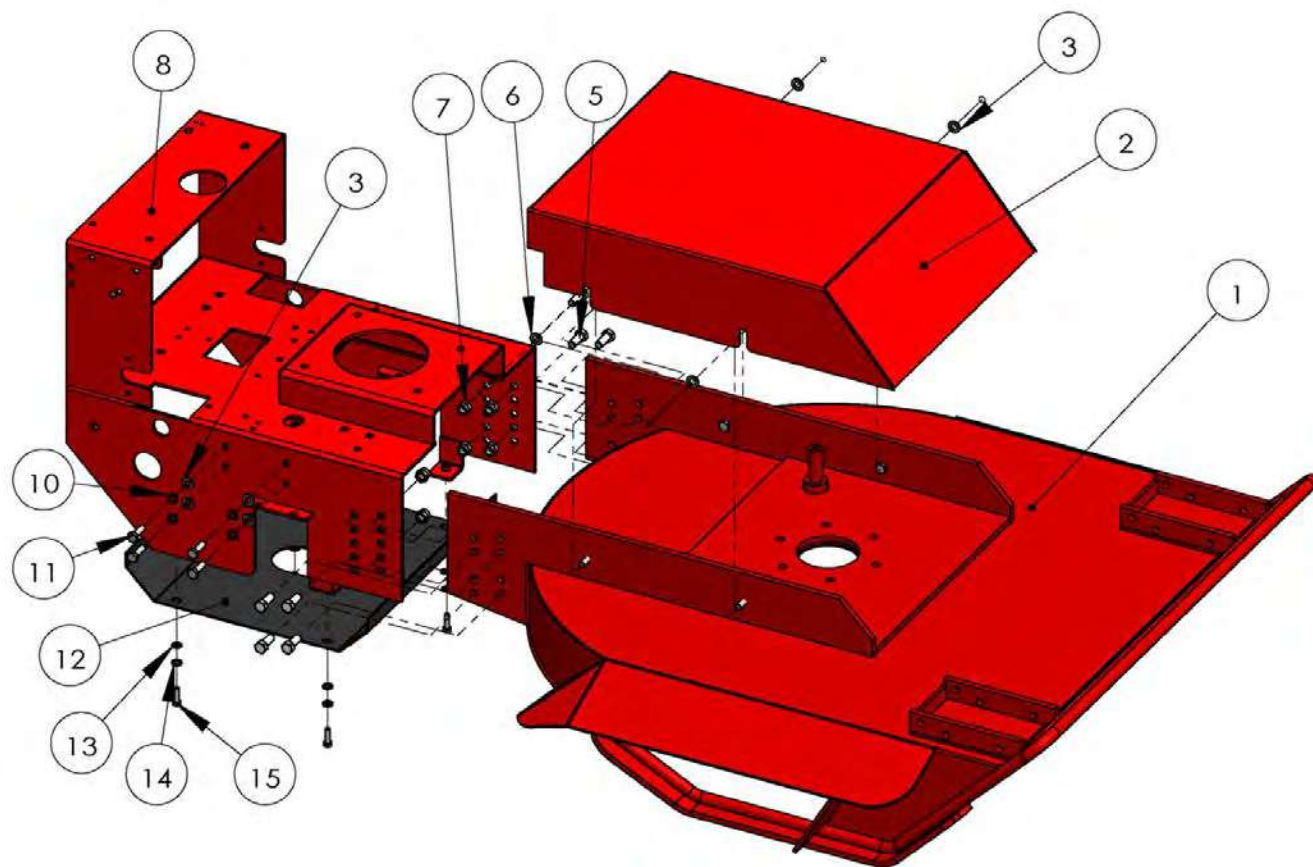




36" Bradley Commercial Brush Mower

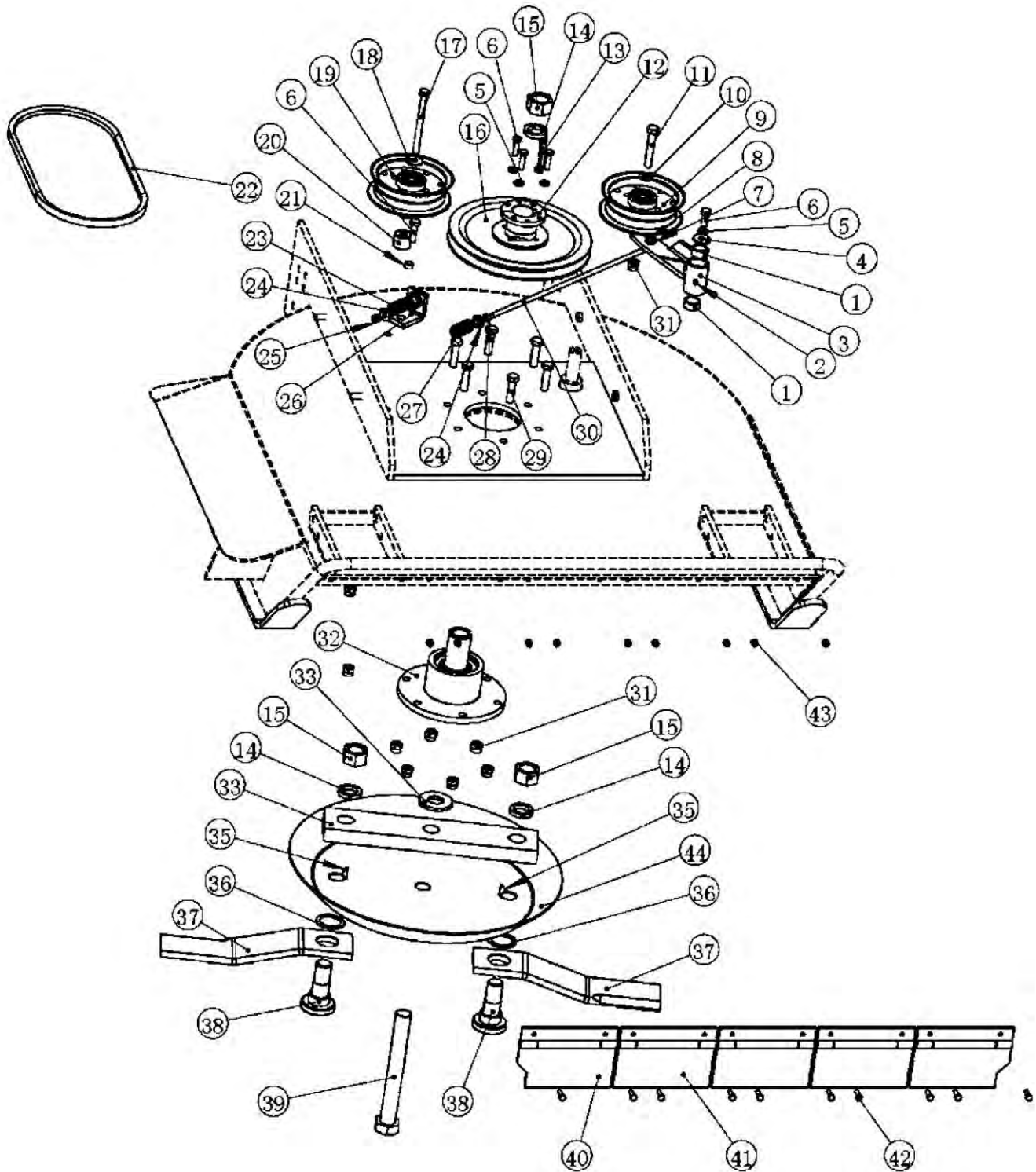
OWNER'S MANUAL & PARTS LIST



FRAME ASSEMBLY

Item	Part Number	Description	Qty
1	WM2836-001	Deck Weldment 36"	1
2	WM2836-002	Hood 36"	1
3	200-010	Plain Washer 10 GB95-85	8
4	100-009	Saucer Nut	4
5	WM2836-003	Hexagon Bolt M12×30	8
6	200-071	Plain Washer 12 GB95-85	8
7	200-007	Nylon Nut M12 GB889-86	8
8	WM2836-004	Rear Deck weldment 36"	1
9	336-102	Battery Box	1
10	200-031	Lock Washer 10 GB93-87	4
11	200-103	Hexagon Bolt M10×30 GB5783	4
12	WM2836-005	Hydraulic motor guard	1
13	200-021	Plain Washer 8 GB95-85	4
14	200-024	Lock Washer 8 GB93-87	4
15	200-019	Hexagon Bolt M8×25 GB5783	4

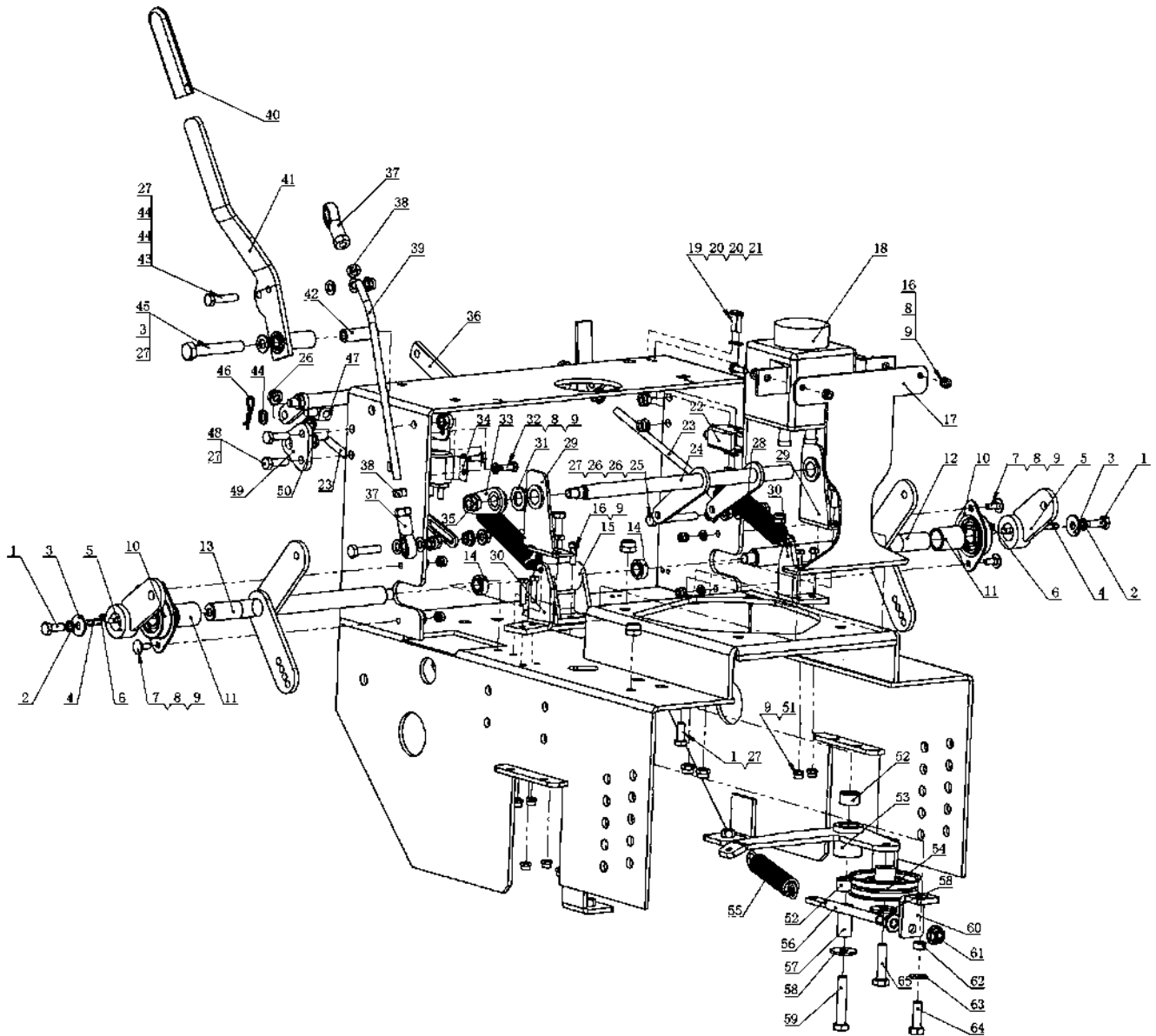
FRONT DECK ASSEMBLY



FRONT DECK ASSEMBLY

Item	Part Number	Description	Qty
1	WM2836-035	Copper sleeve	2
2	200-026	Grease Fitting M6 GB1152-89	1
3	WM2836-008	Deck Idler Arm Weldment	1
4	WM2836-036	Washer 2.5x10.5idx30od	1
5	200-024	Lock Washer 8 GB 93-87	5
6	200-025	Hexagon Bolt M8*30 GB5783-86	6
7	200-014	Cotter Pin 2*20 GB91-86	1
8	200-021	Plain Washer 8 GB95-85	1
9	300-002a	Idler Pulley	1
10	200-303	Plain washer 12 GB95	1
11	200-311	Hexagon bolt M12x70 GB5782-86	1
12	WM2836-009	H-Bushing	1
13	200-214	Key 12x8x50	1
14	200-213	Lock Washer 27 GB93-87	3
15	200-212	Hexagon Nut M27x2 GB41	3
16	WM2836-010	Pulley	1
17	200-312	Hexagon bolt M12x120 GB5782-86	1
18	200-303	Plain washer 12 GB95	1
19	WM2836-037	Idler Pulley	1
20	WM2836-038	Space 24	1
21	WM2836-039	Link Bushing 9*10.5 id*14 od	1
22	WM2836-019	Belt Engine to Blade	1
23	WM2836-040	spring I	1
24	WM2836-041	Regulate Nut	2
25	200-030	Nylon Nut M8 GB889-86	1
26	WM2836-042	Back Overhang Plate	1
27	WM2836-043	spring II	1
28	200-208	Nut M8 GB6170	1
29	200-216	Hexagon bolt M12x40 GB5783	6
30	WM2836-044	Rod Belt Tension Hook	1
31	200-007	Nylon Nut M12 GB889-86	7
32	WM2836-012	Cutting Housing Assembly	1
33	WM2836-045	Plain Washer 6*27 id *60 od	1
34	WM2836-013	Inertia Plate	1
35	200-217	Key 5x7.5x19	2
36	WM2836-046	Plain Washer 2*38 id *50 od	2
37	WM2836-014	Blade	2
38	WM2836-015	Fix Blade Bolt	2
39	WM2836-017	Bolt M27*2*220	1
40	WM2836-047	Crusher Grass Plate I	2
41	WM2836-048	Crusher Grass Plate II	3
42	200-072	Hexagon bolt M6x20 GB5783	10
43	200-009	Nylon Nut M6 GB889-86	10
44	WM2836-016	Fix Blade Plate	1

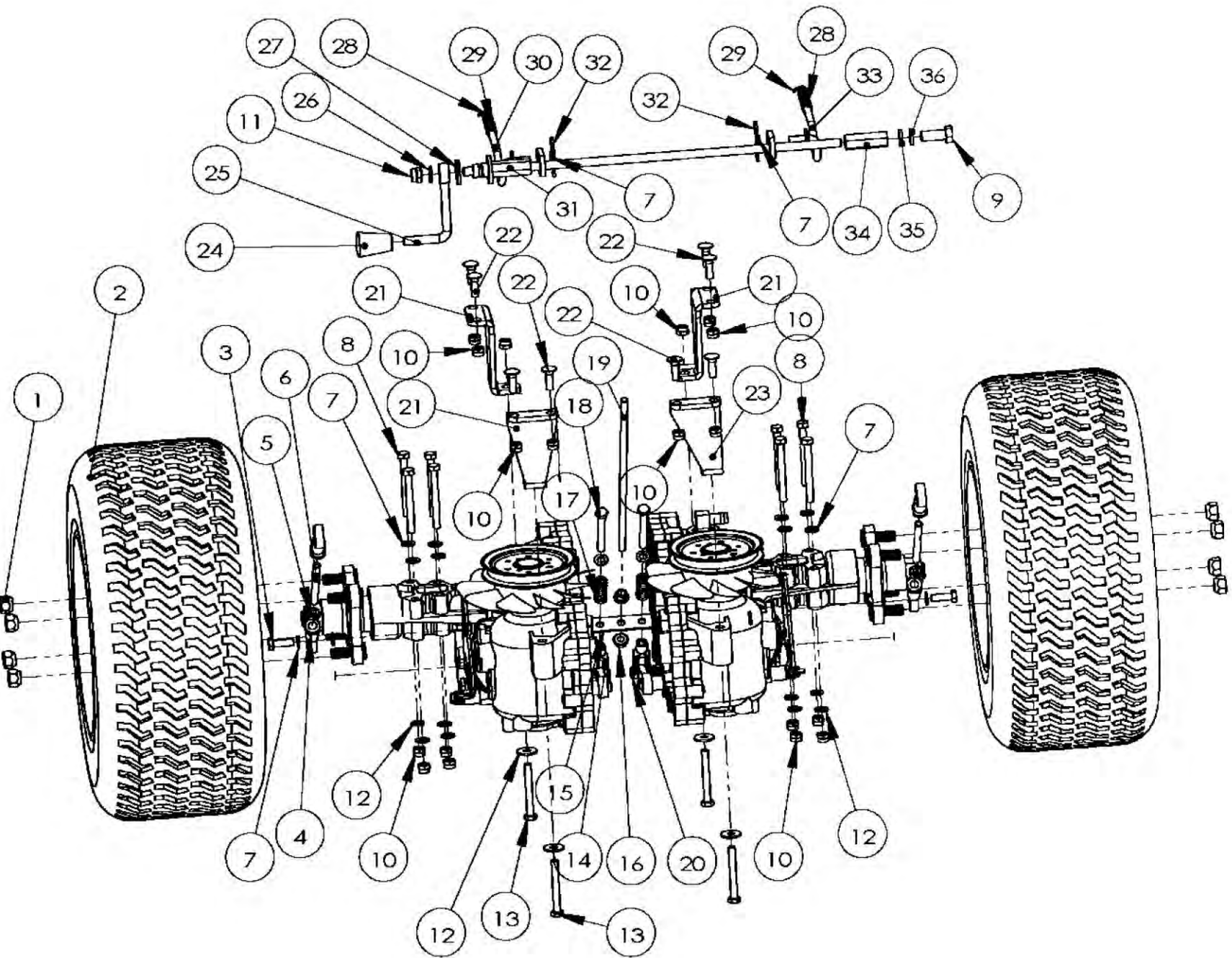
TRANSMISSION DRIVE ASSEMBLY



TRANSMISSION DRIVE ASSEMBLY

Item	Part Number	Description	Qty
1	200-099	Hexagon bolt M8x20 GB5783	4
2	200-024	Lock Washer 8 GB93-87	2
3	200-098	Plain Washer 8 GB96	3
4	200-086	Key 6x6x20	2
5	300-43	Link Arm	2
6	200-083	Bolt Screws M8x8 GB79-85	2
7	200-011	Bolt M6x16 GB/T794-93	4
8	200-024	Plain Washer 6 GB95-85	8
9	200-009	Nylon Nut M6 GB889-86	15
10	300-042	Flange bearing	2
11	300-092	Tube	2
12	336-132	Control rod weldment LH	1
13	336-131	Control rod weldment RH	1
14	200-081	Spherical plain bearing	2
15	300-040	Link seat	1
16	200-036	Hexagon Bolt M8*20 GB5783-86	5
17	WM2836-026	Hydraulic oil oiler bracket	1
18	WM2836-025	Hydro Reservoir	1
19	200-200	Phillips pan head screws M5X20 GB818	2
20	200-138	Plain washer 5GB95	4
21	200-013	Nylon Nut M5 GB889-86	2
22	336-130a	Switch	1
23	300-057	Rod	2
24	WM2836-049	Shift speed weldment	1
25	200-084	Hexagon bolt M8x60 GB5783	2
26	200-029	Nut Flange M8 GB6187-86	8
27	200-030	Nylon Nut M8 GB889-86	11
28	300-039	Spring	2
29	336-127	Parking stand I	2
30	WM2836-050	Spring fitting	2
31	WM2836-051	Washer 4x16idx30od	1
32	200-120	Hexagon bolt M6x16GB5783	2
33	366-122a	Parking drawing board	1
34	700-134	Solion	1
35	200-006	Nylon Nut M10 GB889-86	1
36	336-125	Parking axis	1
37	300-015B	Rod End Rh8	2
38	900-195	Hexagon Nut M8 GB41	2
39	336-119	Parking lever A	1
40	100-045	Flat Drip	1
41	336-120a	Handle parking	1
42	336-186	Parking lever support sleeve	1
43	200-049	Hexagon Bolt M8*35 GB5783-86	2
44	200-021	Plain Washer 8 GB95-85	6
45	200-075	Hexagon Bolt M8x65 GB5782-86	1
46	200-069	Hair Pin Cotter	2
47	300-050	Rectangle swivel	2
48	200-119	Hexagon bolt M8x25 GB5783	4
49	300-044	Plug in board	2
50	300-045	Nylon flange pivot	2
51	200-313	Hexagon Bolt M6*25 GB5783-86	4
52	300-033	Bushing, straight pivot	2
53	336-135	Revolved Arm Weldment	1
54	WM2836-052	Idle Pulley	1
55	100-057	Traction Spring	1
56	300-037	Rod thread	1
57	300-032	Pivot hub	1
58	200-010	Plain Washer 10 GB96-85	2
59	200-068	Hexagon Bolt M10x55 GB5782-86	1
60	336-134	Back Overhang Plate	1
61	200-016	Nut Flange M10 GB6187-86	2
62	100-032	Link Bushing 7*10.5 id*14 od	1
63	200-010	Plain Washer 10 GB95-85	1
64	200-103	Hexagon bolt M10x30GB5783	1
65	WM2836-053	Hexagon bolt M10x43	1

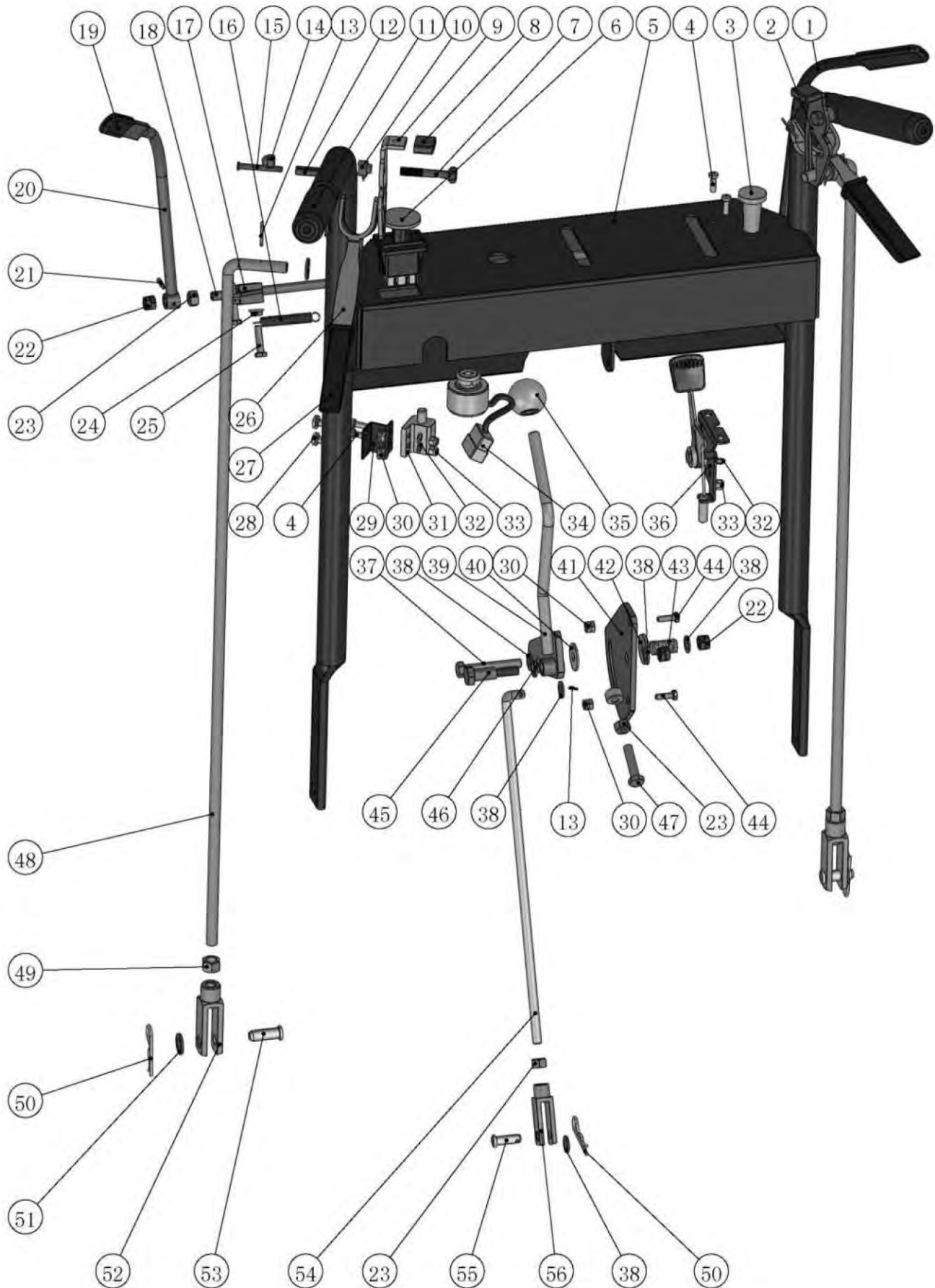
Brake and Wheel Assembly



BRAKE AND WHEEL ASSEMBLY

Item	Part Number	Description	Qty
1	200-076	Nut 1/2-20	8
2	WM2836-027	Tire and wheel assembly	2
3	200-025	Hexagon Bolt M8*30 GB5783-86	2
4	300-015B	Rod End Rh8	4
5	900-195	Hexagon Nut M8 GB41	2
6	336-115	Speed control lever	2
7	200-021	Plain Washer 8 GB95-85	18
8	200-189	Hexagon Bolt M8*75 GB5782-86	8
9	200-004	Hexagon Bolt M12*25 GB5783-86	1
10	200-030	Nylon Nut M8 GB889-86	22
11	200-006	Nylon Nut M10 GB889-86	1
12	200-098	Plain washer 8 GB96	12
13	200-075	Hexagon Bolt M8x65 GB5782-86	4
14	300-007	Free Bar	2
15	WM2836-028	Gear Parking Plate II	1
16	200-029	Nut Flange M8 GB6187-86	2
17	WM2836-029	Parking Spring	2
18	200-220	Hexagon Bolt M8x70 GB5783-86	2
19	WM2836-030	Reverse link	1
20	300-003	Clevis Pin	2
21	336-109	Hydraulic motor support plate	3
22	200-131	Square neck bolt M10x25 GB801	8
23	WM2836-031	Hydraulic motor support plate II	1
24	300-024	Shifter knob	1
25	336-107	Neutral Handle	1
26	200-010	Plain Washer 10 GB95-85	1
27	200-221	Plain Washer 16 GB95-85	1
28	300-012	Neutral Spring	2
29	336-111	Flexible cylindrical pin 3*16	2
30	WM2836-032	Left back to the oil lever	1
31	336-114	Neutral Lever Weldment	1
32	200-069	Hair Pin Cotter	4
33	WM2836-033	Right back to the oil lever	1
34	300-009	Tube with Thread	1
35	200-071	Plain Washer 12 GB95-85	1
36	200-078	Lock Washer 12 GB93-87	1

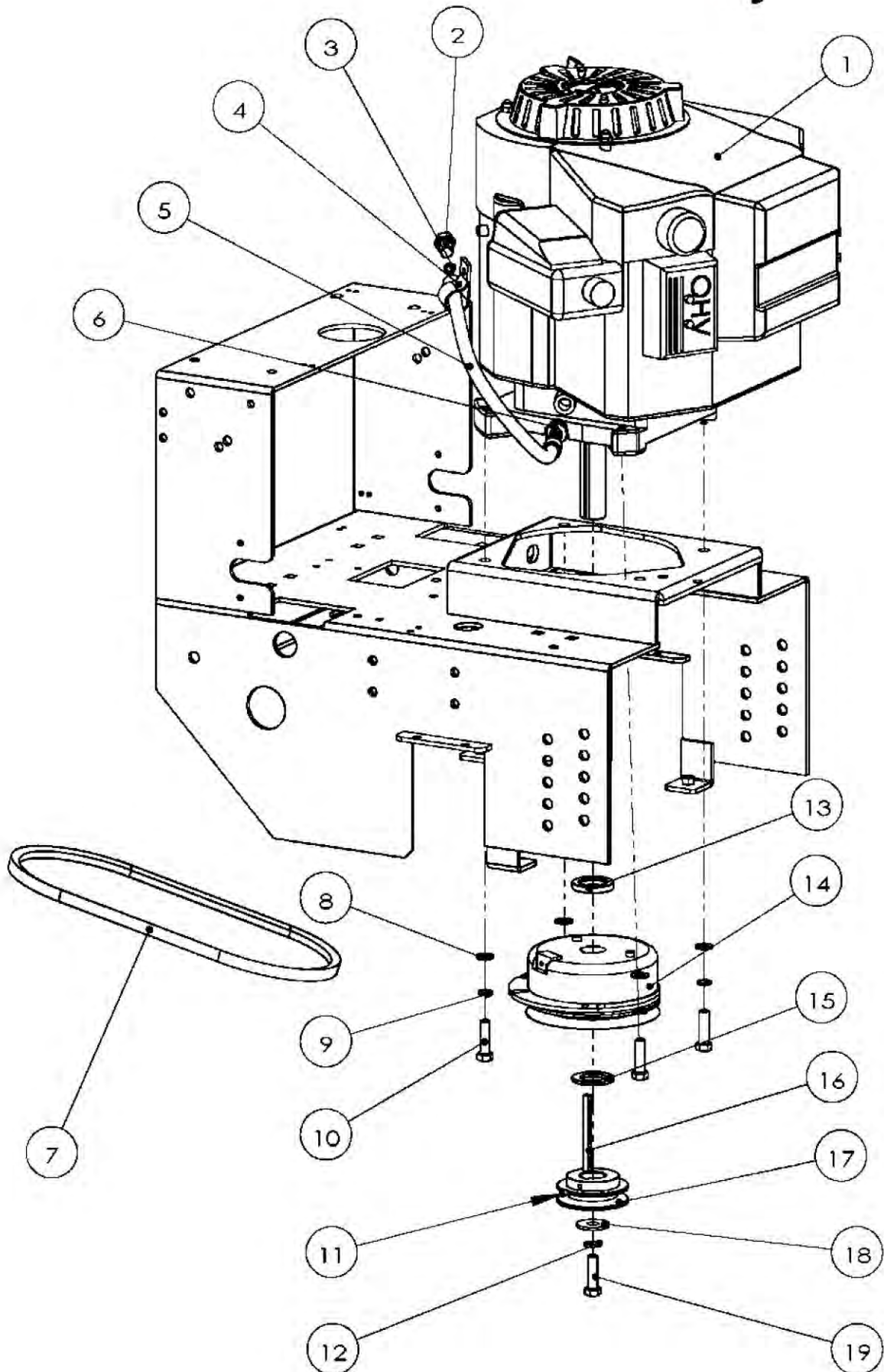
HANDLE CONTROL ASSEMBLY



HANDLE CONTROL ASSEMBLY

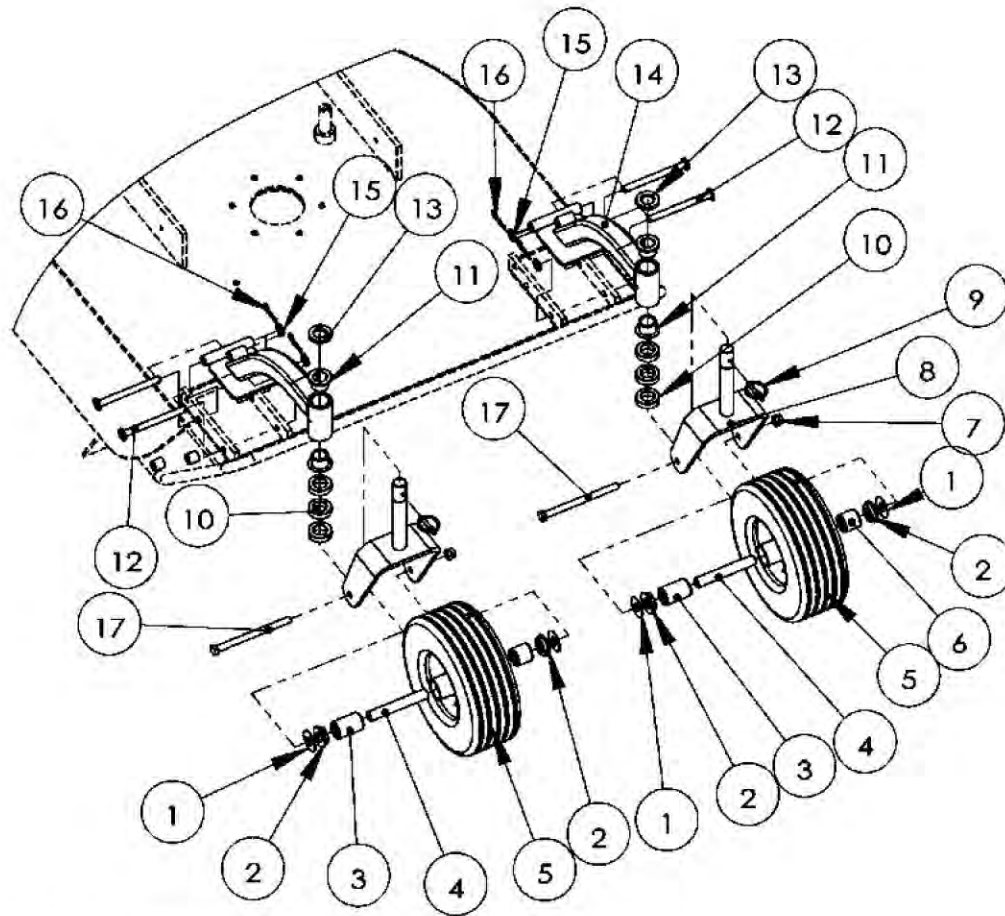
Item	Part Number	Description	Qty
1	336-165	Opc Lever RH	1
2	336-148	Traction lock wish grip RH	1
3	336-149	Throttle cable	1
4	200-012	Bolt M5*15 GB818-85	4
5	336-152	Top handle weldment	1
6	700-142	Blade Switch	1
7	200-055	Hexagon Bolt M6*50 GB5782-86	2
8	336-150	Rubber sleeve	2
9	336-147	Traction lock wish grip LH	1
10	VM2836-054	Lock Cover	2
11	100-072	Handle Grip	2
12	100-076	Roll Pin	2
13	200-014	Cotter Pin 2x20 GB91-86	7
14	200-051	Nut M6 GB923-88	2
15	100-075	Clevis Pin Traction Control Lever	2
16	336-167	Return spring	1
17	VM2836-055	Micro switch welding pieces	1
18	336-163	Safety lever shaft	1
19	100-125	Small handle grip	2
20	336-164	Opc Lever LH	1
21	336-111	Flexible cylindrical pin3X16	2
22	200-030	Nylon Nut M8 GB889-86	4
23	900-195	Hexagon Nut M8 GB41	4
24	200-203	Nut Flange M6 GB6187-86	1
25	200-313	Hexagon Bolt M6*25 GB5783-86	1
26	100-073	Traction Control Lever	2
27	VM2836-056	Traction Control Lever Grip	2
28	200-314	Bolt M6*16 GB818-85	2
29	VM2836-057	Switch Mounting Plat	1
30	200-009	Nylon Nut M6 GB889-86	4
31	336-130a	Switch	1
32	200-138	Plain washer 5GB95	6
33	200-013	Nylon Nut M5 GB889-86	4
34	336-168	Ignition Switch	1
35	300-073	Ball handle	1
36	336-166	Throttle Control	1
37	200-079	Hexagon bolt M8x50GB5782-86	1
38	200-021	Plain Washer 8 GB95-85	5
39	VM2836-058	Speed rod	1
40	300-072	Nylon washer	2
41	VM2836-059	Lead board	1
42	200-098	Plain washer 8GB96	1
43	300-070	Compression spring	1
44	200-120	Hexagon bolt M6x16GB 5783	2
45	VM2836-060	Speed Control Lever Shaft	1
46	VM2836-061	Adjusting Pad	1
47	200-104	Hexagon bolt M8x30GB5783	1
48	300-068	Traction Rod	2
49	200-027	Nut Thin M10 GB6172-86	2
50	200-069	Hair Pin Cotter	3
51	200-010	Plain Washer 10 GB95-85	6
52	336-161	Free Bar	2
53	336-160	Clevis Pin	2
54	300-075	Blade Rod	1
55	300-003	Clevis Pin	1
56	300-007	Free Bar	1

REAR DECK ASSEMBLY

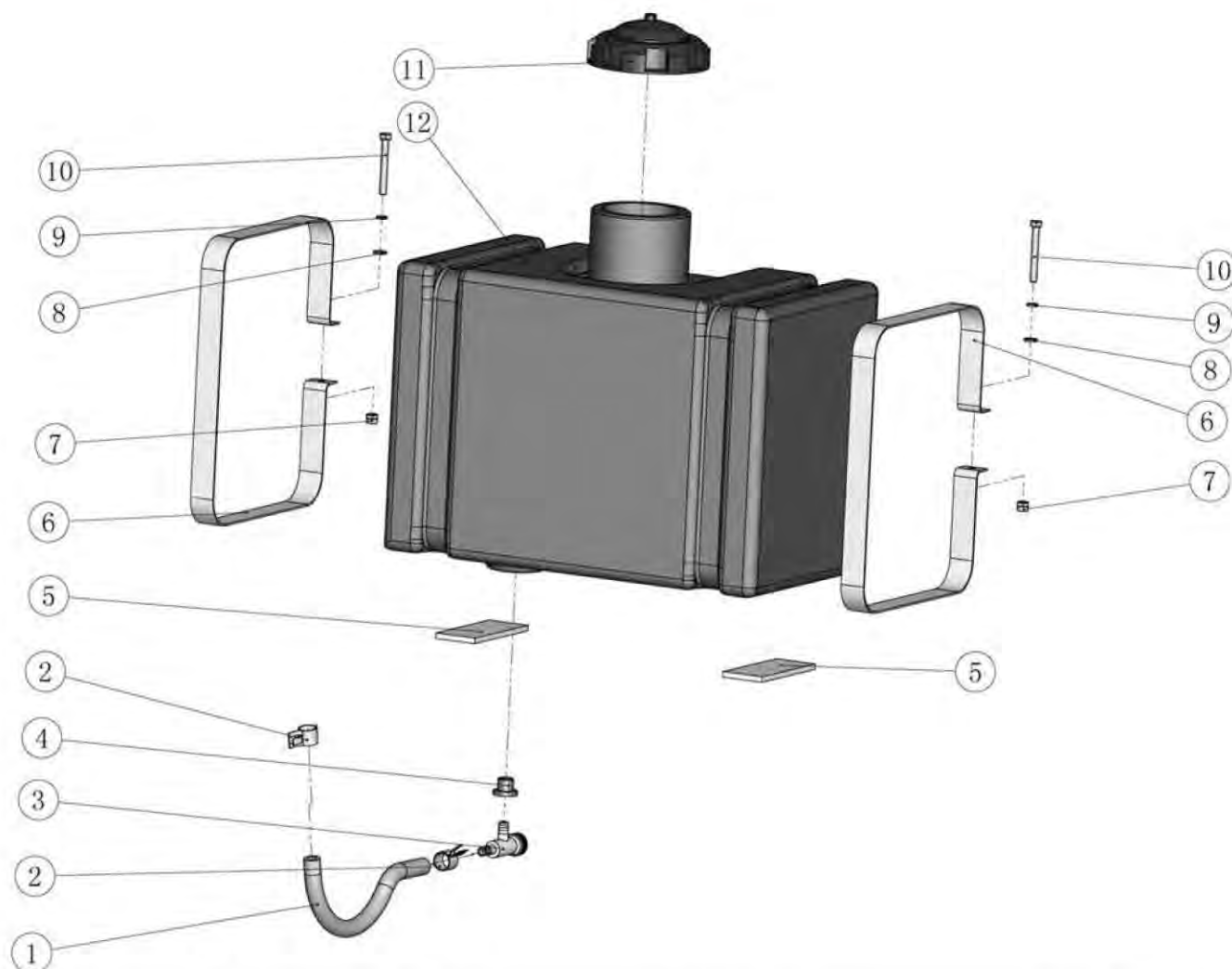


REAR DECK ASSEMBLY

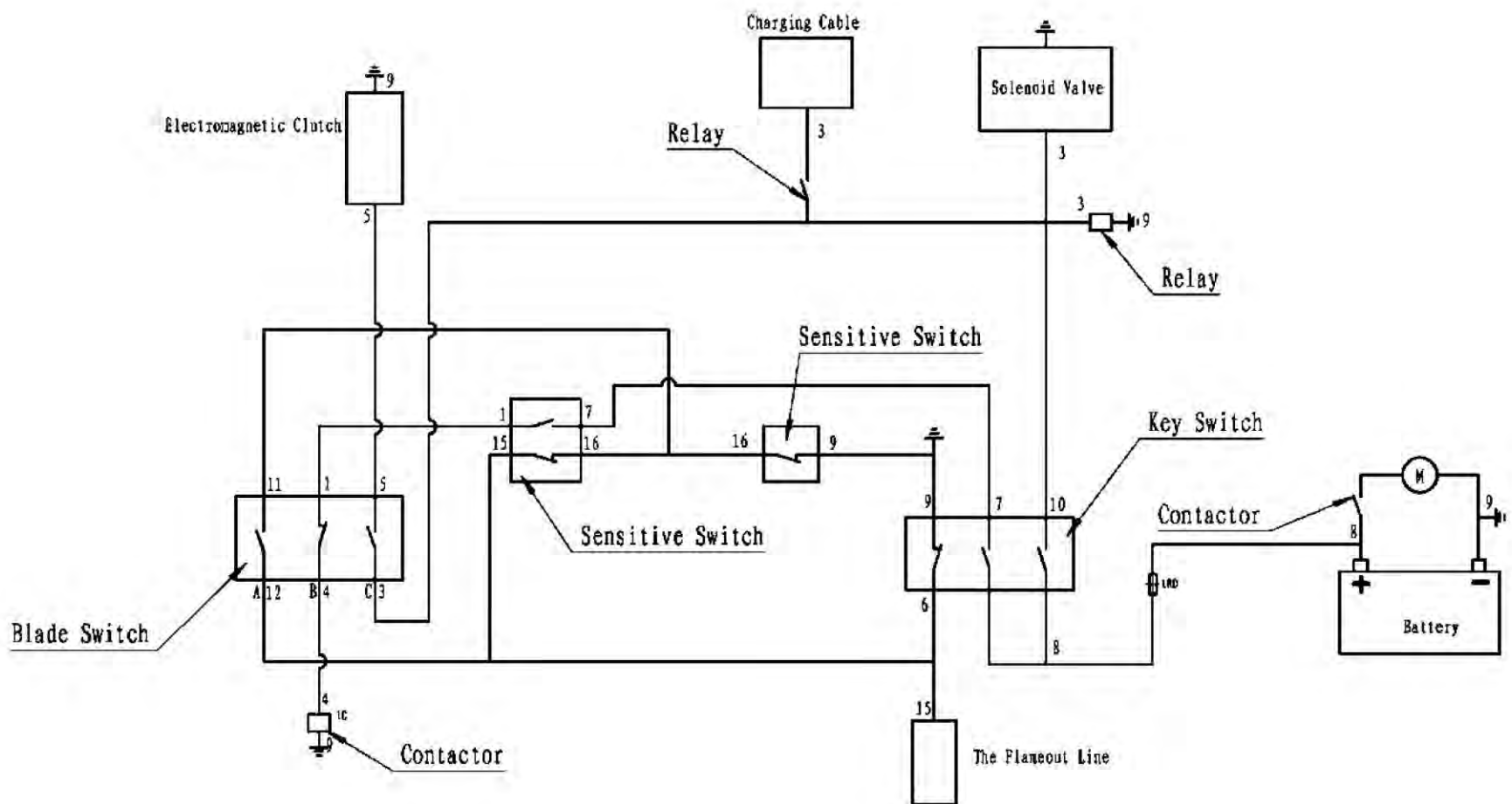
Item	Part Number	Description	Qty
1	N/A	Engine Assembly	1
2	300-061	Hexagon Bolt M14*1.5*20	1
3	300-060	Nylon washer	2
4	300-062	Pipe clamp	1
5	300-059	Dischrge oil pipe	1
6	WM2836-062	Fitting	1
7	WM2836-063	Tranmision Belt	1
8	200-010	Plain Washer 10 GB95-85	4
9	200-031	Lock Washer 10 GB93-87	4
10	200-209	Hexagon Bolt 3/8-16-1 1/2	4
11	200-315	Screws M6x10GB77	1
12	200-078	Lock Washer 12 GB93-87	1
13	WM2836-064	Spacer I	1
14	N/A	Hydraulic Fitting	1
15	WM2836-065	Spacer II	1
16	WM2836-066	Key 6.35*6*60	1
17	WM2836-020	Pulley,input	1
18	WM2836-067	Spacer	1
19	200-050	Bolt 7/16-20-1 1/2,Engine	1

FRONT CASTER ASSEMBLY

Item	Part Number	Description	Qty
1	336-139	Adjust the pad	4
2	700-158	Front Wheel Washer	4
3	336-141	Needle roller bearings	2
4	700-157	Pivot Tube,Castor	2
5	700-156	Tire 11*4-5	2
6	336-142	Needle roller bearings	2
7	200-007	Nylon Nut M12 GB889-86	2
8	336-140	Castor Yoke	2
9	100-097	Lynch Pin	2
10	100-098	Spacer 13	6
11	100-100	Bushing,Castor	4
12	WM2836-022	Connecting Pin	4
13	100-099	Spacer 6.5	2
14	WM2836-023	Castor Support	2
15	200-071	Plain Washer 12 GB95-85	4
16	200-069	Hair Pin Cotter	4
17	200-133	Heagon Bolt M12*170 GB5782-86	2

FUEL TANK ASSEMBLY

Item	Part Number	Description	Qty
1	100-106	Fuel Line	1
2	200-059	Fuel Line Clamp	2
3	100-105	Fuel Shut Off Valve	1
4	100-109	Tube Insert	1
5	100-107	Tank Pad	2
6	336-143	Fuel Tank Strap	2
7	200-009	Nylon Nut M6 GB889-86	2
8	200-042	Plain Washer 6 GB95-85	2
9	200-053	Lock Washer 6 GB93-87	2
10	200-058	Hexagon Bolt M6*50 GB5783-86	2
11	336-144	Fuel Tank Cap	1
12	336-145	Fuel Tank Body	1



ELECTRICAL DIAGRAM

PRODUCT REGISTRATION

CUSTOMER INFORMATION

Name: _____

Business Name (if any): _____

Address: _____

City: _____ State: _____ Zip: _____

Phone Number: _____ Fax Number: _____

Email Address: _____

DEALER INFORMATION (place of purchase)

Dealer's Name (required): _____

Dealer's Address: _____

City: _____ State: _____ Zip: _____

Phone Number: _____

(The remaining dealer information will help you get warranty service faster should you need it.)

DEALER INFORMATION

Product Name and Model Number: _____

Serial Number (required for all mowers): _____

Engine Brand and Size: _____

Engine Serial Number: _____

(Engines are warranted through their respective manufacturers. Please see your engine manual for more details.)

Signature _____ Date of Purchase: _____

KEEP YOUR RECEIPT WITH A COPY OF THIS REGISTRATION FORM

Mail your completed form to:
Havener Enterprises, Inc.
368 S. Michigan Ave.
Bradley, IL 60915

Email your completed form to:
info@havenerent.com

Fax your completed form to:
888.785.1348

Your first answer in product service is your authorized Bradley dealer!

Your product warranty is only valid if this form is completed, signed, and returned to Havener Enterprises, Inc. within two weeks of product purchase. See the warranty statement for more details.

☐ Check here to decline communication by mail or email